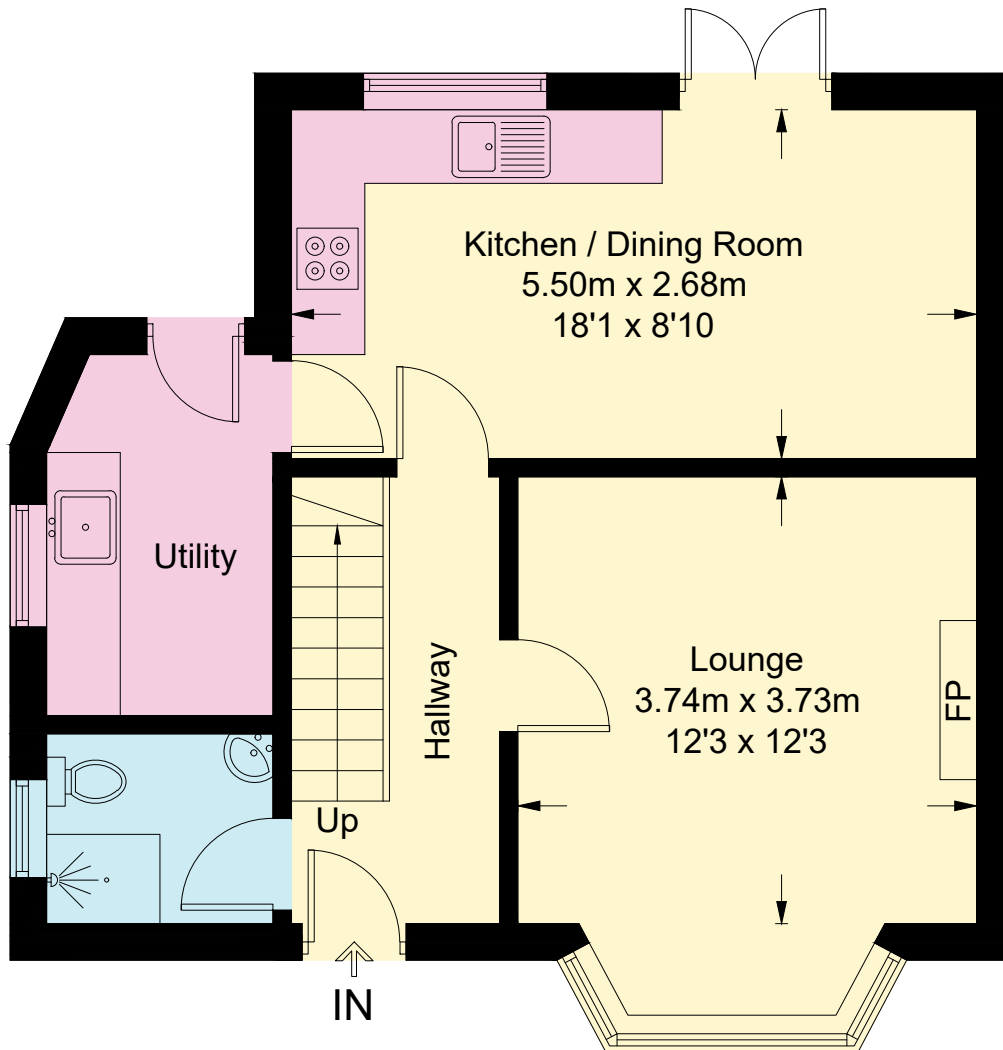
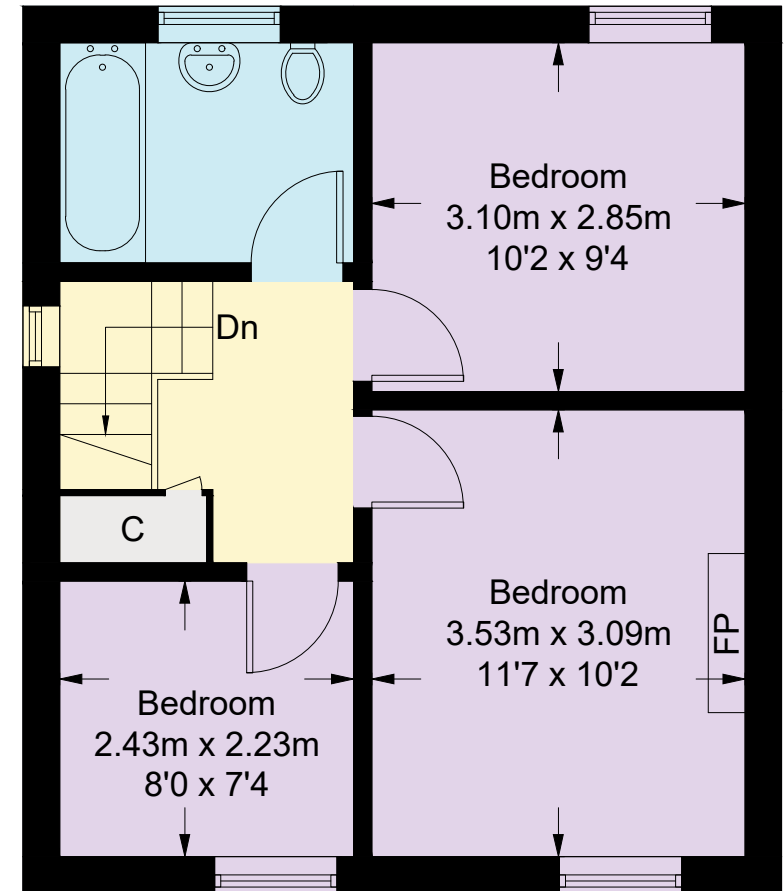


# The Briars, Conwy Road, Dolwyd, Colwyn Bay, LL28 5HP

Approximate Gross Internal Area = 85.6 sq m / 921 sq ft



**Ground Floor**



**First Floor**

This plan is for layout guidance only. Not drawn to scale unless stated. Windows and door openings are approximate. Whilst every care is taken in the preparation of this plan, please check all dimensions, shapes and compass bearings before making any decisions reliant upon them.

Fourlabs.co © (ID1261861)